

RPL8 Antibody (C-term)
Affinity Purified Rabbit Polyclonal Antibody (Pab)
Catalog # AP14372b**Specification**

RPL8 Antibody (C-term) - Product Information

| | |
|-------------------|--|
| Application | WB,E |
| Primary Accession | P62917 |
| Other Accession | P41116 , P62919 , P62918 , Q6POV6 , Q3T0S6 , NP_150644.1 , NP_000964.1 , G1TT27 |
| Reactivity | Human |
| Predicted | Bovine, Zebrafish, Mouse, Rabbit, Rat, Xenopus |
| Host | Rabbit |
| Clonality | Polyclonal |
| Isotype | Rabbit IgG |
| Calculated MW | 28025 |
| Antigen Region | 207-236 |

RPL8 Antibody (C-term) - Additional Information**Gene ID** 6132**Other Names**

60S ribosomal protein L8, RPL8

Target/Specificity

This RPL8 antibody is generated from rabbits immunized with a KLH conjugated synthetic peptide between 207-236 amino acids from the C-terminal region of human RPL8.

Dilution

WB~~1:1000

E~~Use at an assay dependent concentration.

Format

Purified polyclonal antibody supplied in PBS with 0.09% (W/V) sodium azide. This antibody is purified through a protein A column, followed by peptide affinity purification.

Storage

Maintain refrigerated at 2-8°C for up to 2 weeks. For long term storage store at -20°C in small aliquots to prevent freeze-thaw cycles.

Precautions

RPL8 Antibody (C-term) is for research use only and not for use in diagnostic or therapeutic procedures.

RPL8 Antibody (C-term) - Protein Information

Name RPL8

Function Component of the large ribosomal subunit. The ribosome is a large ribonucleoprotein complex responsible for the synthesis of proteins in the cell.

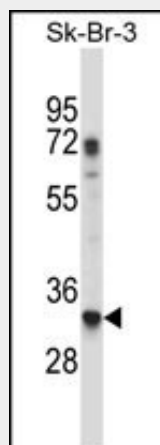
Cellular Location

Cytoplasm.

RPL8 Antibody (C-term) - Protocols

Provided below are standard protocols that you may find useful for product applications.

- [Western Blot](#)
- [Blocking Peptides](#)
- [Dot Blot](#)
- [Immunohistochemistry](#)
- [Immunofluorescence](#)
- [Immunoprecipitation](#)
- [Flow Cytometry](#)
- [Cell Culture](#)

RPL8 Antibody (C-term) - Images

RPL8 Antibody (C-term) (Cat. #AP14372b) western blot analysis in SK-BR-3 cell line lysates (35ug/lane). This demonstrates the RPL8 antibody detected the RPL8 protein (arrow).

RPL8 Antibody (C-term) - Background

Ribosomes, the organelles that catalyze protein synthesis, consist of a small 40S subunit and a large 60S subunit. Together these subunits are composed of 4 RNA species and approximately 80 structurally distinct proteins. This gene encodes a ribosomal protein that is a component of the 60S subunit. The protein belongs to the L2P family of ribosomal proteins. It is located in the cytoplasm. In rat, the protein associates with the 5.8S rRNA, very likely participates in the binding of aminoacyl-tRNA, and is a constituent of the elongation factor 2-binding site at the ribosomal subunit interface. Alternatively spliced transcript variants encoding the same protein exist. As is typical for genes encoding ribosomal proteins, there are multiple processed

pseudogenes of this gene dispersed through the genome. [provided by RefSeq].

RPL8 Antibody (C-term) - References

Salas, S., et al. Int. J. Cancer 125(4):851-860(2009)
Stelzl, U., et al. Cell 122(6):957-968(2005)
Andersen, J.S., et al. Nature 433(7021):77-83(2005)
Rush, J., et al. Nat. Biotechnol. 23(1):94-101(2005)
Rush, J., et al. Nat. Biotechnol. 23(1):94-101(2005)